

Maestro

Display

LX, SD, Slim

MAESTRO



Maestro offers an ultra-contemporary view of your products with a range of advanced features including adjustable display depths. Maestro is offered as a traditional display cabinet but can also easily be worked into a custom counter.

750 MAESTRO LX

- AMBIENT °
- Chilled 39.2°-60.8°
- Heated 140°
- Frozen -0.4° to -40°



750mm

600 MAESTRO XD

- AMBIENT °
- Chilled 39.2°-60.8°
- Chilled 39.2°-60.8°
- Heated 140°



600mm

500 MAESTRO SLIM

- AMBIENT °
- Chilled 39.2°-60.8°
- Chilled 39.2°-60.8°
- Heated 140°

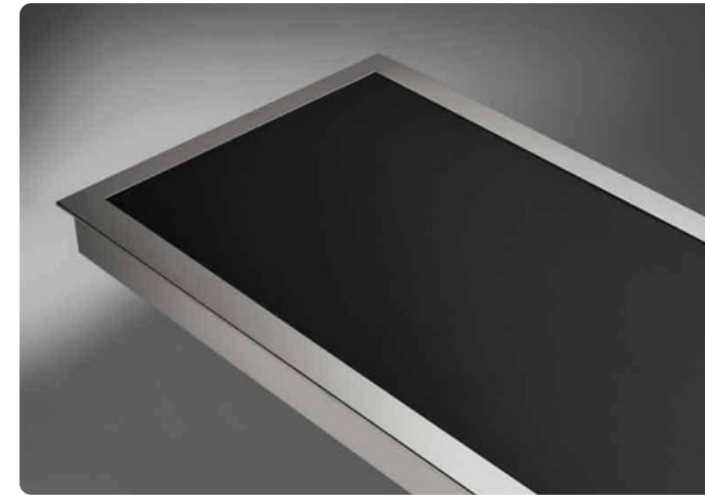


500mm

The Maestro Slim is a versatile and space efficient solution.

Combining style and functionality that can work in almost any space.

MAESTRO FEATURES:



Hot Food Display



Hot Bain Marie Display



Gelato & Ice Cream Display



Available with Cabinet



Display at Multiple Levels



FOR PROFESSIONAL SHOWCASING.





The Maestro is ideal for frozen products, able to hold a double row of professional ice cream tubs, pans, as well as frozen dessert products such as cakes, cups, and popsicles.



✱
Frozen
-0.4° to -40°



Chilled
39.2°-60.8°

Heated
140°

Frozen
-0.4° to -40°



The Maestro can be easily channeled, allowing for greater design creativity, as well as the ability to showcase several food types along side one another.



40°F

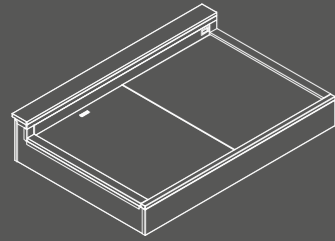




An Ultra-Modern Solution

750 MAESTRO LX


 **AMBIENT
TEMPERATURE**

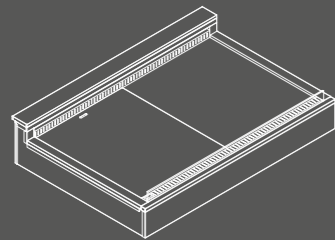


PRESERVING TECHNOLOGIES

- Ambient temperature

TECHNICAL FEATURES
Enbloc body with environment-friendly foamed polyurethane insulation, density 40/45 Kg/m³. Internal sheet iron structure with glossy covering. It is also available the 90° open module.

 **T+ 39.2° to 60.8°
CHILLED**
(ALSO AVAILABLE WITH HUMIDITY CONTROL)

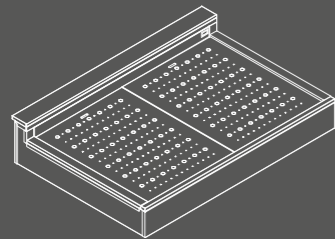


PRESERVING TECHNOLOGIES

- Positive temperature.
- Positive temperature with humidity control
- Positive temperature with cool/hot alternated functioning

TECHNICAL FEATURES
Monolithic body, insulated with ecologic foamed polyurethane, density 40/45 Kg/m³. External covering of the door made of galvanized sheet iron. For the positive temperature with cool/hot alternated functioning it is foresees a display top with heating elements. Warmed glass on the front side. It is also available the 90° open module.


 **T+ 140°
HEATED**
DRY WET WARMED

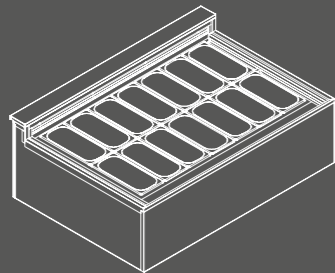


PRESERVING TECHNOLOGIES

- Dry Wet warmed

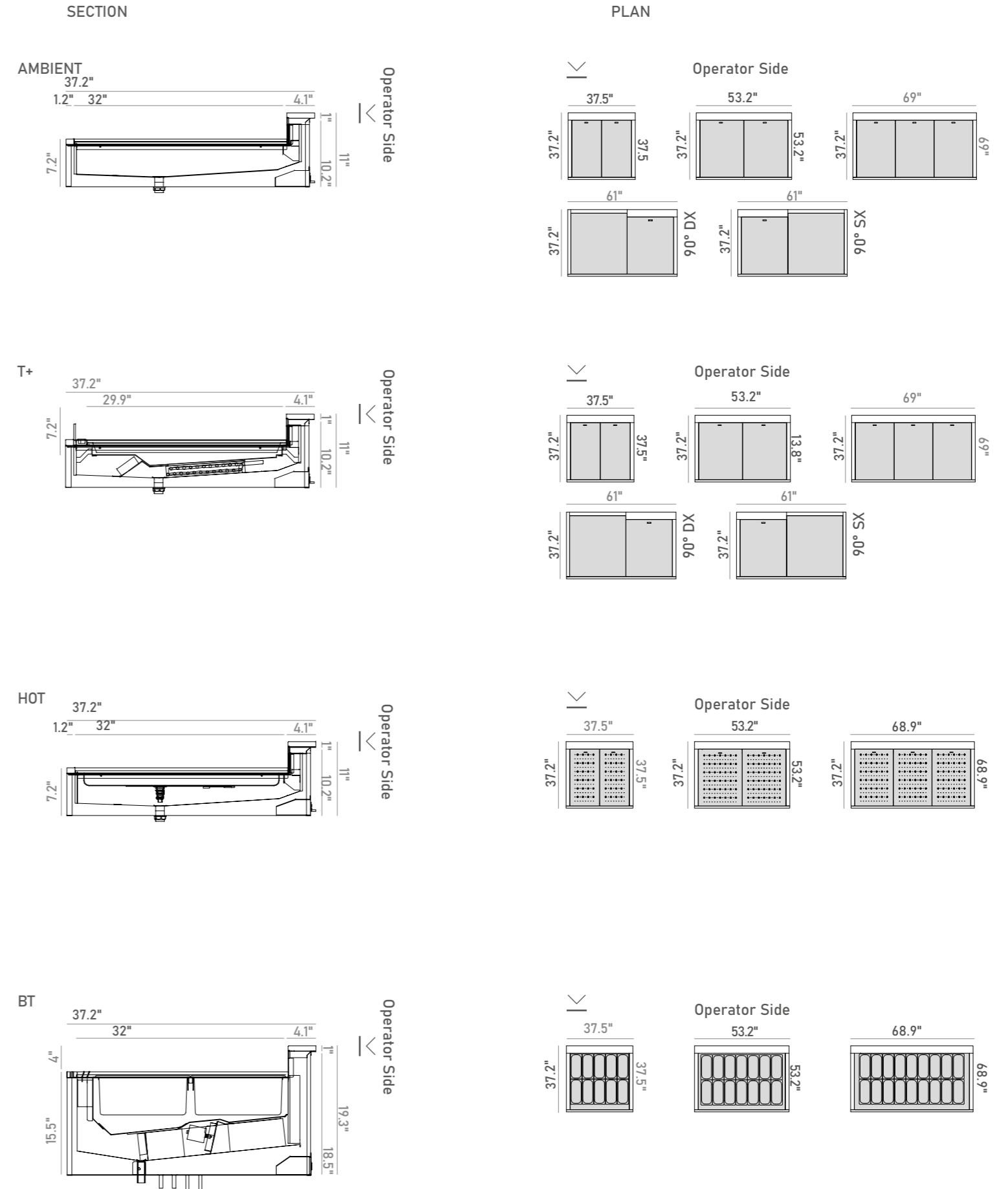
TECHNICAL FEATURES
Monolithic body, insulated with ecologic foamed polyurethane, density 40/45 Kg/m³. External covering of the door made of galvanized sheet iron. The basins are made of stainless steel (AISI304) with BA glossy finish and are prearranged for installing holed tops for the steam outlet. AISI 304 stainless steel basin with glossy finish prearranged for inserting holed tops for steam outlet.

 **-0.4° to -40°
FROZEN**



TECHNICAL FEATURES
Enbloc body with environment-friendly foamed polyurethane insulation, density 40/45 Kg/m³. External stainless steel covering. Internal sheet iron structure with glossy covering. Front warmed glasses and side panels (on the right and on the left).

DIMENSIONS



KEEP YOUR PRODUCTS VISIBLE

A contemporary, minimalist style.





35 Trade Zone Court, Ronkonkoma, NY 11779
631-981-2100
Customerservice@gtidesigns.com