

gti

DESIGNS

WINE CELLAR

BY GTI DESIGNS

WWW.GTIDESIGNS.COM

Step Into Luxury

The Wine Cellar from GTI Designs is the perfect combination of temperature and humidity control. Offering a solution for all of your wines – red, white, rosé and champagne.

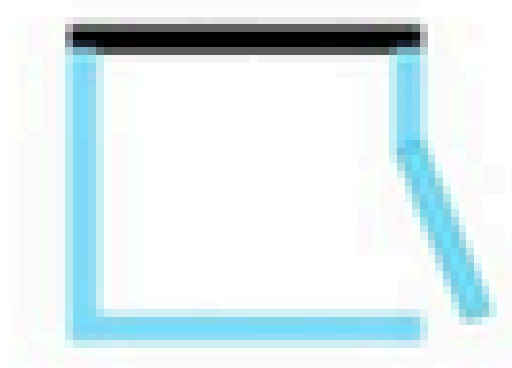
This climate controlled wine cellar offers a visually elegant, glass-fronted modular design. Available in different dimensions, and styles. This exemplary walk-in display is a perfect addition to almost any food service concept.

gti **DESIGNS**

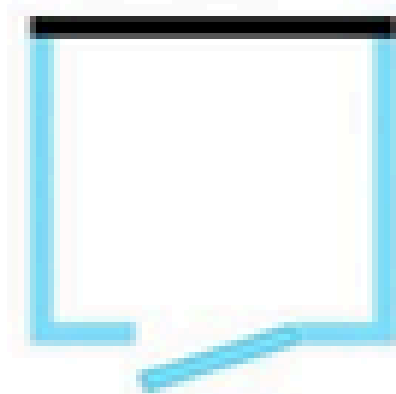




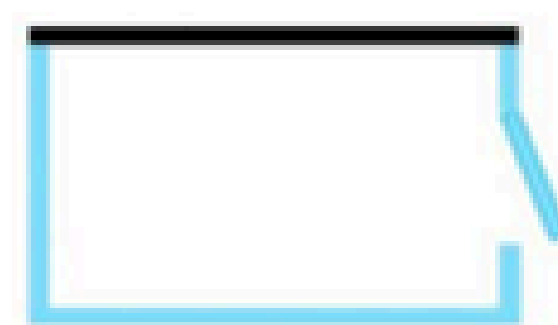




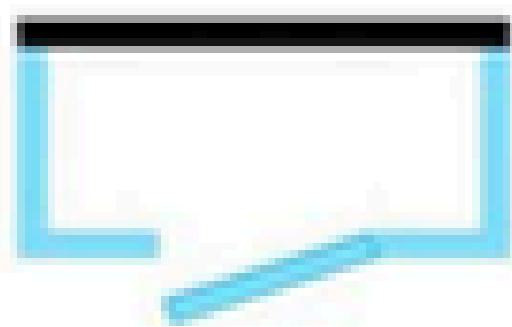
WN1515
5.5'x5.5'x9'
58°-65.5°F



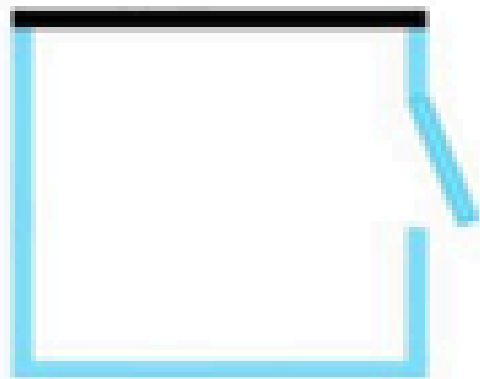
WN2020
7.25'x7.25'x9'
58°-65.5°F



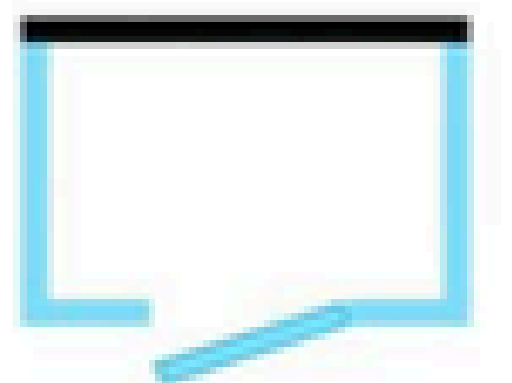
WN3020
10.5'x7'x8'
58°-65.5°F



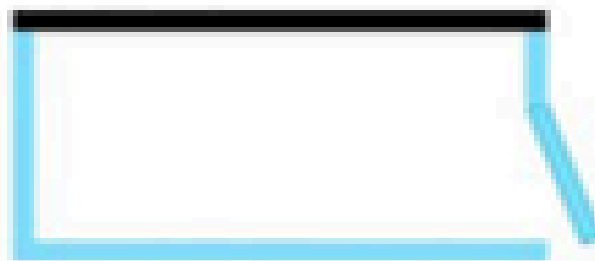
WN2010
7'x4'x8'
58°-65.5°F



WN2025
9'x9'x8'
58°-65.5°F



WN2015
7'x5.5'x8'
58°-65.5°F



WN3015
10.5'x5.5'x8'
58°-65.5°F



*One solid wall and up to three glass sides for each unit. Custom sizes available (X amount of one meter panels added to each side).

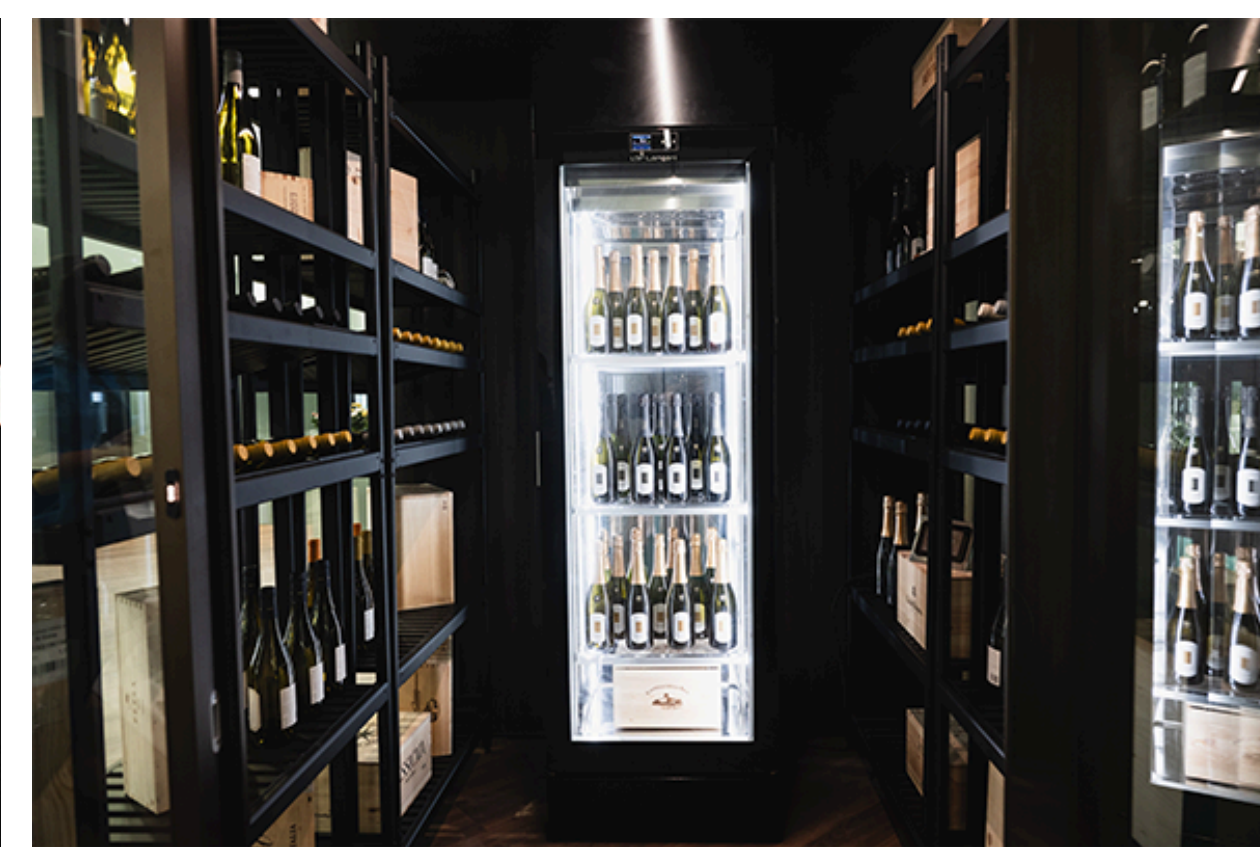
Technical Specifications



Double Paned Patented Glass System



Optional Shelving & Storage Available



Auxiliary Refrigerated Units for
White Wine & Champagne



User Friendly Temperature Control

Traditionally, constructing a glass-fronted wine cellar is a very expensive, and work-intensive undertaking. Often requiring different services from multiple vendors. The Wine Cellar by GTI Designs makes this gorgeous feature more accessible, cost effective, and efficient than ever!

- Sound Dampening System
- Patented Technology for full Climate Control
- Options for Red and White Wines
- Visually Stunning Design
- Modular Unit, Flexible for Any Space
- LED Lighting for Enhanced Display

Product Features



35 Trade Zone Court
Ronkonkoma, NY 11779
631-981-2100
CustomerService@gtidesigns.com

gti

DESIGNS

www.gtidesigns.com

